

CORRIGENDUM #4 DATED 08.05.2021
DESIGN, FABRICATION, SUPPLY, INSTALLATION & COMMISSIONING OF PRESSURE REGULATING SKID
Tender No :AGCL/BD/PMC-GHT/PRS/2020/65 Dated 07.04.2021

Sl. No.	Clause No.	Page No.	Original Description	Amendment/ Addition/ Modification/ Deletion	Details
1	Scope of Bid	1 of 24	Bid document sale end date and Time	Amendment	Extended upto 17.05.2021 till 1400Hrs
2	Scope of Bid	1 of 24	Bid submission end date and Time	Amendment	Extended upto 17.05.2021 till 1430Hrs
3	Scope of Bid	1 of 24	Technical bid opening date and time	Amendment	Extended upto 17.05.2021 till 1500Hrs
4	Annexure-VIII & X			Addition	a) The Revised P&ID for the PRS skid as referred in Sl.1.01 to 1.08 of Price schedule has been furnished as Annexure-VIII . b) The Revised P&ID for the PRS skid as referred in Sl.2.01 of Price schedule has been furnished as Annexure-X .
5	Corrigendum#2			Deletion	The Corrigendum#2 may be treated as cancelled
6	Price Schedule			Amendment	For SI 1.01 to 1.08: The basic rate should include the rate of PRS plus the canopy. For SI 2.01: The basic rate should be exclusive of canopy rate. In this case, the canopy is not required.








Notes:

1. Bidders to submit signed and stamped copy of this Corrigendum#4 along with Unprice Bids.

2. All other terms and conditions of tender document shall remain unchanged.

NOTE:



SSV+PCVM	: SLAM SHUT OFF VALVE WITH MONITOR PRESSURE CONTROL VALVE		DPG	: DIFF. PRESSURE GAUGE
PCVA	: ACTIVE PRESSURE CONTROL VALVE		PG	: PRESSURE GAUGE
PSV	: PRESSURE SAFETY VALVE		TM	: TURBINE METER
CRV	: CREEP RELIEF VALVE		EVC	: ELECTRONIC VOLUME CORRECTOR
VBF	: ISOLATION BALL VALVE FLANGED			
VBS	: ISOLATION BALL VALVE SOCKETWELD			
CF	: CARTRIDGE FILTER			

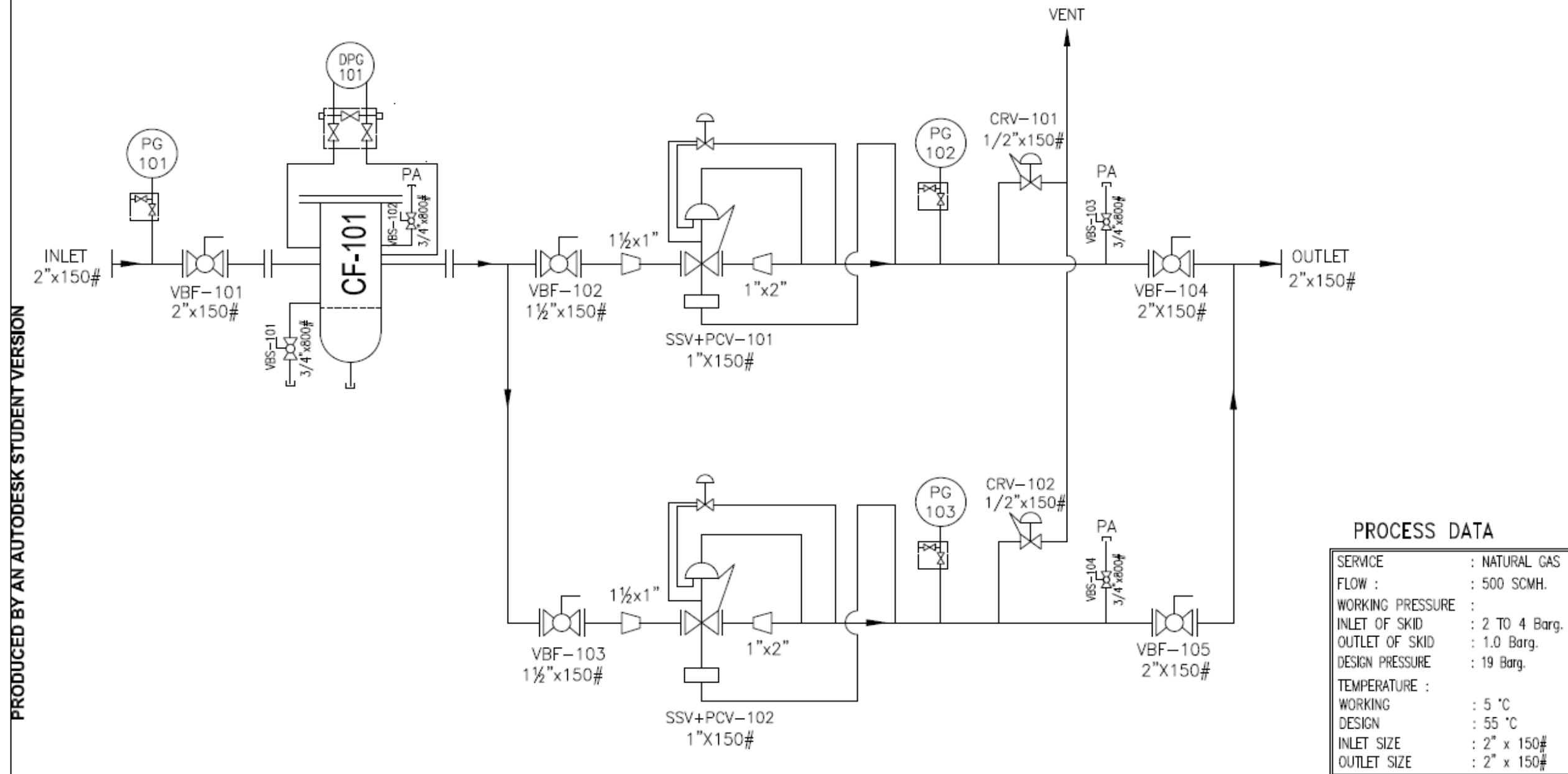
Sr.	Flow Rate	Skid Inlet Size	Skid Outlet Size	Minimum	Monitor PCV 4	Active PCV	*Meter Size at
Unit	SCMH	Inch	Inch	Inch	Inch	Inch	Inch
1	300	3" Sch 40	2" Sch 40	10"	2"	2"	G1600/3"
2	500	5" Sch 40	3" Sch 40	10"	2"	2"	G1250/3"
3	800	4" Sch 40	4" Sch 40	12"	2"	2"	G1000/3"
4	1000	6" Sch 40	4" Sch 40	16"	2"	2"	G1000/16"
5	1500	6" Sch 40	6" Sch 40	16"	3"	3"	G1000/6"
6	2000	8" Sch 40	6" Sch 40	20"	3"	3"	G1000/6"
7	2500	8" Sch 40	6" Sch 40	20"	3"	3"	G1600/8"
8	3000	8" Sch 40	8" Sch 40	20"	4"	4"	G1600/8"

Note: Regulator Sizing shall be done at 0.5 bar outlet pressure. Dp across each regulator shall be 0.2.

Bidder must consider minimum Vessel dia as stated above. However as per bidder, design must select equal or higher vessel dia. Bidder must select Element, Cyclone based on his design.

ANNEXURE- X

PRODUCED BY AN AUTODESK STUDENT VERSION



NOTE-

1. CRV VENT SHALL BE TERMINATED AT 3 METER FROM GROUND LEVEL.
2. COMPANION FLANGE NOT IN NIRMAL SCOPE OF SUPPLY.

LEGENDS :- INSTRUMENT / EQUIPMENT

SSV+PCV	: SLAM SHUT OFF VALVE WITH : PRESSURE CONTROL VALVE	DPG	: DIFF. PRESSURE GAUGE
CRV	: CREEP RELIEF VALVE	PG	: PRESSURE GAUGE
VBF	: ISOLATION BALL VALVE FLANGED		
VBS	: ISOLATION BALL VALVE		
CF	: FILTER		

PRODUCED BY AN AUTODESK STUDENT VERSION

PRODUCED BY AN AUTODESK STUDENT VERSION